

## **REPORT OF INDUCTION PROGRAM**

### **DEPARTMENT OF SOCIAL WORK**

**16 JULY 2019**

Department of Social work, Guru Ghasidas Vishwavidyalaya organized one day Induction Program for newly admitted students on 16 July 2019. The overall aim of the induction program was to orient all newly admitted students of the Department- BSW 1 semester and MSW 1 semester about University and Departmental activities and to make them informed regarding it.

The objectives of the Induction Program were:

- To make students know about university and department.
- To get important information and gain knowledge related to different program and schemes/services meant for students
- To interact with each other and come to understand students, teachers and office support staff.
- To orient students about facilities in department and provide information about course curriculum including exam pattern (end semester and internals), attendance.
- To discuss with students provide knowledge about field work practicum (concurrent field work, summer placement, block placement etc.)

Induction program started with a session of Dr. Archana Yadav, Assistant Professor, Department of Social Work. Her session was on the subject “Services and Programs of University and Students”. She welcomed students in new session and started her session.

She discussed about some topics which were:

1. Dean Student Welfare and services
2. Anti Ragging Cell
3. Proctorial Board
4. SC/ST Cell
5. Psychological Counseling Cell

6. University Transportation facilities.
7. Extra Curricular and personality development activities:
  - NSS National Service Scheme
  - Sports Week
  - UDAAN magazine
  - Annual event of School AKSA

Along with above all she also explained students about the examination pattern and attendance with its conditions.



Her second session was on “Field Work in Social Work do’s and don’ts”. In this session she focused on the importance of field work in social work subject and hat are the basics need to be followed by students while going in field and at the time of working in field. She also explained students about importance of field work attendance and conditions of less attendance in field work. She discussed how to manage in different situations raised at the time of field work. She gives information about field work monitoring and assessment. Who will monitor field work progress and assess it was also discussed in which she talk about agency supervisor and department supervisor who will also be mentor of the particular student. She ends her session

with giving blessing to students for choosing social work as their subject and pursuing career in this.



Before Lunch Dr Sangya Tripathi interacted with new student. She mentioned the Amenities and Student Welfare Schemes of the Vishwavidyaya which is very important for newly admitted students. She told how they can take benefits from these Amenities and Student Welfare Schemes.

The aim of this Interaction class was to ensure that new Students feel welcomed and comfortable with their new environment and acquainted to the University Amenities and Welfare Schemes. This lecture also tried to develop awareness about the culture of the Department and the University

The following major points covered by Dr Sangya Tripathi under the induction programme

- The Central Library
- Health centre
- Hostel
- Centre Placement Cell
- Auditorium

- Bus Service
- Cafeteria
- Bank Facilities
- Student Association
- Student Publication
- Apex Complaint

The post lunch session was taken by Shri Vikram Singh Head of the Department Social Work, he oriented new students about the following points:

- Scheme of Examination and attendance
- Course curriculum
- CBCS
- Generic Elective subjects of different departments for BSW students.
- NGO placement
- Disciplinary rules of the department
- Code of Conduct etc.

Along with discussion on the above subjects he also explained students about different NGOs working at Bilaspur on several issues which will be further helpful for students in choosing NGO as per their area of interest. He discussed with students about different types of placement as: Concurrent field work placement, summer placement and block placements etc.

The induction program ended with an hour interaction session of fresher students with senior students focused to share information about different NGOs with whom they have completed their concurrent field work placement. His session was held with an objective to know about NGOs and its nature working at Bilaspur so that new students can give their NGO preference with their choice as per interest basis.

**M.Sc. Zoology Students  
(2020-2021)**



*Department of Zoology*  
**Guru Ghasidas University, Bilaspur,  
Chhattisgarh**

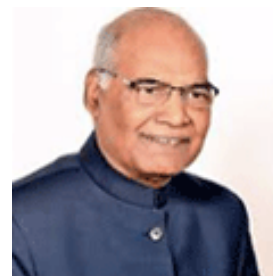


**Welcome to  
Guru Ghasidas University  
Congratulations  
To  
all of you  
for being admitted  
into  
M.Sc. Zoology**

**About Guru Ghasidas University**

- This university is appropriately named to honor the great Satnami Saint Guru Ghasidas.
- Guru Ghasidas Vishwavidyalaya, is a Central University of India, located in Bilaspur C.G. State.
- Established under Central Universities Act 2009, No. 25 of 2009.

**Visitor**



**Shri Ram Nath Kovind  
Hon'ble President of India**

**Honorable Chancellor**



**Prof. Ashok Modak**

**Honorable Vice Chancellor**



**Professor Anjila Gupta**

### Registrar



**Prof. Shalendra Kumar**

### Dean Students Welfare



**Dr. Madhvendra Nath Tripathi**

### Health Center

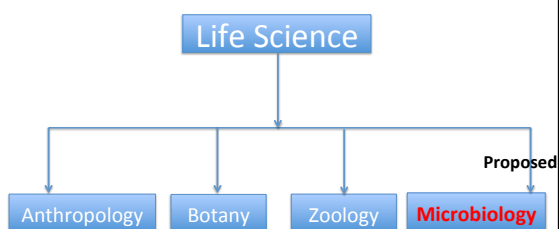


**Dr. A. N. Mondal  
Medical Officer**

### Different Schools of GGV

1	School of Studies in Mathematical & Computational Science
2	School of Studies in Natural Resource
3	School of Studies in Social Sciences
4	School of Studies in Life Science
5	School of Studies in Physical Sciences
6	School of Studies in Arts
7	School of Studies in Management & Commerce
8	School of Studies in Engineering & Technology
9	School of Studies in Law
10	School of Studies of Studies in interdisciplinary Education and Research
11	School of Studies in Education

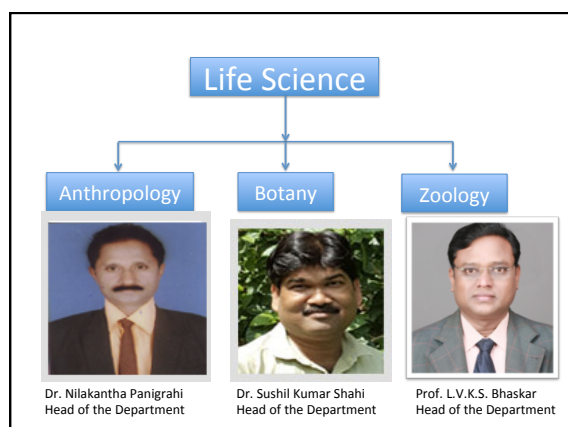
### School of Studies in Life Science



### Dean SoS Life Sciences



**Prof. L.V.K.S. Bhaskar**



### Department Building (Front)



### Department Building (Back)



### About Department of Zoology

- The Department of Zoology is one of the first departments to be established by Guru Ghasidas Vishwavidyalaya
- The vision of the department is to provide quality science education to ignite the mind of the young students.
- Department is expanding its arm from teaching in UG and PG level to the basic and clinical research.

### About Department of Zoology...

- Department of Zoology is also offering Ph. D. program in the areas in life sciences.
- The department laboratory contains all essential instruments for imparting practical knowledge to the students.
- Departmental Instrumentation room is equipped with all the necessary sophisticated instruments for conducting basic and applied research work.
- Approximately 1800 books are available in the departmental library.

### About Department of Zoology ...

- The Department is blessed with young and highly motivated faculty members
- The thrust area of research includes
  - Neuroendocrinology
  - Neuroscience
  - Toxicology
  - Fish Biology and Fisheries
  - Biochemistry and Molecular Biology
  - Epidemiology.

### Zoology Department Faculty

				
Prof. LVKS. Bhaskar	Dr. Rohit Seth	Dr. Seema Rai	Dr. Monika Bhaduria	
				
Dr. S.K. Verma	Dr. Santosh Singh	Dr. M.K. Tripathi	Dr. Neha Jain	Dr. Geeta Mishra
				
Dr. N. C. Agrawal	Dr. Nisha Sahu	Dr. Bindushree Bhagel	Dr. Samrat Rakshit	

Type of Course	Course Code	Title of the Course	Lecture- Tutorial- of Practical / week	No. of credits	Continuous Compreh- ensive Assessment (CCA)	End- Semester Exam. (ESE)	Total
<b>Semester – 1<sup>st</sup></b>							
Core Course 1	LZT 101	Comparative Anatomy of Vertebrates	4	4	40	60	100
Core Course 2	LZT 102	Cell Biology	4	4	40	60	100
Core Course 3	LZT 103	Reproduction and Developmental Biology	4	4	40	60	100
Core Course 4	LZT 104	Basic Mammalian Physiology	4	4	40	60	100
Core Course Practical 1	LZL 105	Lab. Exercises based on courses LZT 101 and 102	6	3	40	60	100
Core Course Practical 2	LZL 106	Lab. Exercises based on courses LZT 103 and 104	6	3	40	60	100
				<b>22</b>	<b>240</b>	<b>360</b>	<b>600</b>

### Scheme of B.Sc. Zoology

#### Scheme and Syllabus

For  
B.Sc. Honours Zoology

Under  
Choice Based Credit System (CBCS)

Applicable from Session 2020-2021 to onwards

LZT 101: Comparative anatomy of vertebrates	Dr. Neha Jain
LZT 102: Cell Biology and Evolution	Mr. Samrat Rakshit
LZT 103: Reproduction and Developmental Biology	Dr. M. K. Tripathi
LZT 104: Basic Mammalian Physiology	Dr. Gita Mishra

Type of Course	Course Code	Title of the Course	Lecture- Tutorial- of Practical / week	No. of credits	Continuous Compreh- ensive Assessment (CCA)	End- Semester Exam. (ESE)	Total
<b>Semester II<sup>nd</sup></b>							
Core Course 5	LZT 201	Biochemistry and Molecular Biology	4	4	40	60	100
Core Course 6	LZT 202	Regulatory Physiology Mammalian	4	4	40	60	100
Core Course 7	LZT 203	Endocrinology	4	4	40	60	100
Core Course 8	LZT 204	Biotechniques	4	4	40	60	100
Core Course Practical 3	LZL 205	Lab. Exercises based on course LZT 201 and 202	6	3	40	60	100
Core Course Practical 4	LZL 206	Lab. Exercises based on course LZT 203 and 204	6	3	40	60	100
				<b>22</b>	<b>240</b>	<b>360</b>	<b>600</b>

Type of Course	Course Code	Title of the Course	Lecture- Tutorial- of Practical / week	No. of credits	Continuous Compreh- ensive Assessment (CCA)	End- Semester Exam. (ESE)	Total
<b>Semester III<sup>rd</sup></b>							
Core Course 9	LZT 301	Molecular Genetics	4	4	40	60	100
Core Course 10	LZT 302	Animal Behavior	4	4	40	60	100
DSE: A <i>Biochemistry and Molecular Biology</i>	LZT 303A	Biochemistry of Intermediary Metabolism	4	4	40	60	100
DSE: A <i>Biochemistry and Molecular Biology</i>	LZT 304A	Molecular Biology of Information Pathway: Nucleic Acids	4	4	40	60	100
DSE: B <i>Mammalian Reproductive Physiology and Endocrinology</i>	LZT 303B	Neuroendocrinology and Non-Classical Hormones	4	4	40	60	100
DSE: B <i>Mammalian Reproductive Physiology and Endocrinology</i>	LZT 304B	Male and Female Reproduction	4	4	40	60	100



DSE: C <i>Fish Biology</i>	LZT 303C	Fish Culture and Pathology	4	4	40	60	100
DSE: C <i>Fish Biology</i>	LZT 304C	Fish Anatomy and Physiology	4	4	40	60	100
DSE: D <i>Neuroscience</i>	LZT 303D	Brain and Neuron	4	4	40	60	100
DSE: D <i>Neuroscience</i>	LZT 304D	Developmental Neurobiology	4	4	40	60	100
DSE: E <i>Toxicology</i>	LZT 303E	Occupational and Environmental Toxicity	4	4	40	60	100
DSE: E <i>Toxicology</i>	LZT 304E	Mechanism of Toxicology	4	4	40	60	100
DSE: F <i>Epidemiology and Molecular Genetics</i>	LZT 303F	Basic Epidemiology	4	4	40	60	100
DSE: F <i>Epidemiology and Molecular Genetics</i>	LZT 304F	Clinical Epidemiology	4	4	40	60	100
Core Course Practical 5	LZL 305	Lab. Exercises based on courses LZT 301 and 302	6	3	40	60	100
DSE Practical (Elective)	LZL 306	Lab. Exercises based on courses LZT 303 and 304 (A-F)	6	3	40	60	100
			22	240	360	600	

Semester IV <sup>th</sup>							
Core Course 11	LZT 401	Evolution and Environmental Biology	4	4	40	60	100
Core Course 12	LZT 402	Biostatistics OR Discrete Data Analysis: MOOC	4	4	40	60	100
DSE: A <i>Biochemistry and Molecular Biology</i>	LZT 403A	Protein and Enzymology	4	4	40	60	100
DSE: A <i>Biochemistry and Molecular Biology</i>	LZT 404A	Medical Biochemistry	4	4	40	60	100
DSE: B <i>Mammalian Reproductive Physiology and Endocrinology</i>	LZT 403B	Hormone Receptors and Signaling Mechanism	4	4	40	60	100
DSE: B <i>Mammalian Reproductive Physiology and Endocrinology</i>	LZT 404B	Fertility and Sterility	4	4	40	60	100

DSE: B <i>Mammalian Reproductive Physiology and Endocrinology</i>	LZT 404B	Fertility and Sterility	4	4	40	60	100
DSE: C <i>Fish Biology</i>	LZT 403C	Fish Reproduction, Genetics and Biotechnology	4	4	40	60	100
DSE: C <i>Fish Biology</i>	LZT 404C	Capture Fishery	4	4	40	60	100
DSE: D <i>Neuroscience</i>	LZT 403D	Cellular Neurophysiology and Neurochemistry	4	4	40	60	100
DSE: D <i>Neuroscience</i>	LZT 404D	Sensory, Motor and Regulatory Systems	4	4	40	60	100
DSE: E <i>Toxicology</i>	LZT 403E	Mechanism of Toxicity	4	4	40	60	100
DSE: E <i>Toxicology</i>	LZT 403E	Systemic Toxicity	4	4	40	60	100
DSE: F <i>Epidemiology and Molecular Genetics</i>	LZT 403F	Molecular Markers and Genome Analysis	4	4	40	60	100
DSE: F <i>Epidemiology and Molecular Genetics</i>	LZT 404F	Prenatal Diagnosis and Pre-Implantation Genetics	4	4	40	60	100
DES Dissertation	LZL 405	Project work / Dissertation	12	6	80	120	200
			22	240	360	600	

- **Classes Begin on Tuesday, December 22<sup>nd</sup> and continue as per the Teaching Time-tables**
- We have made a whatsApp group and all teachers handling your classes are already added to the group.
- Make friends and try to learn how to navigate around Department

### Contact Information

GURU GHASIDAS VISHWAVIDYALAYA,  
Koni, Bilaspur, (C.G.),  
India, 495009  
Please visit our university website for more  
information  
<http://www.ggu.ac.in/>

Thank you very much